

The Data Center Cabling & Connectivity Experts

Jilan Shah – Solution Engineer

AGENDA

- Introduction to AFL Hyperscale
- High Density Solutions
- Conclusion & Questions

AFL HYPERSCALE.

Introduction to AFL Hyperscale



Data center cabling and connectivity experts



Fast Support



Product Availability



Excellent Value



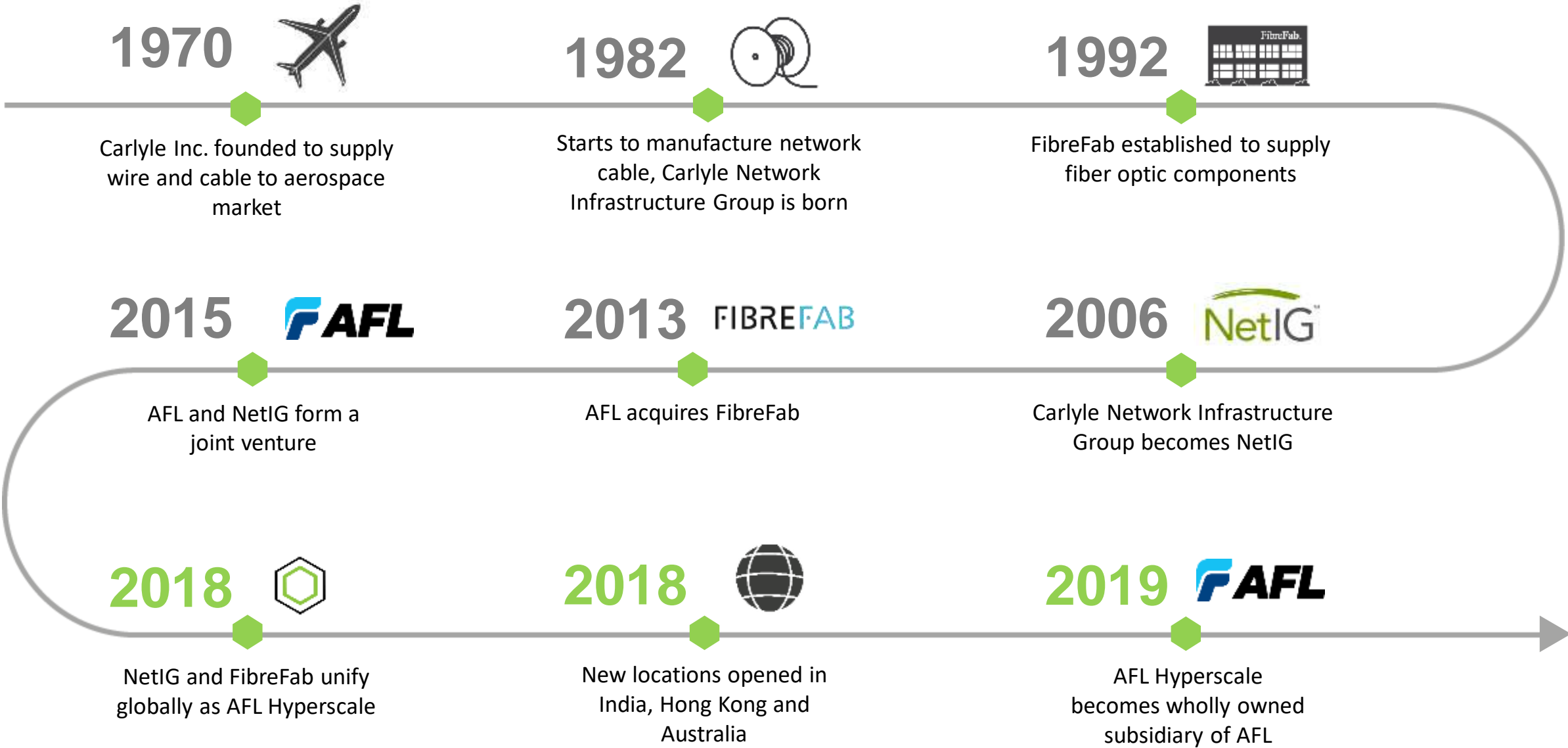
Product Innovation



OUR FAMILY



HISTORY AND MILESTONES



96 COUNTRIES
SOLD TO

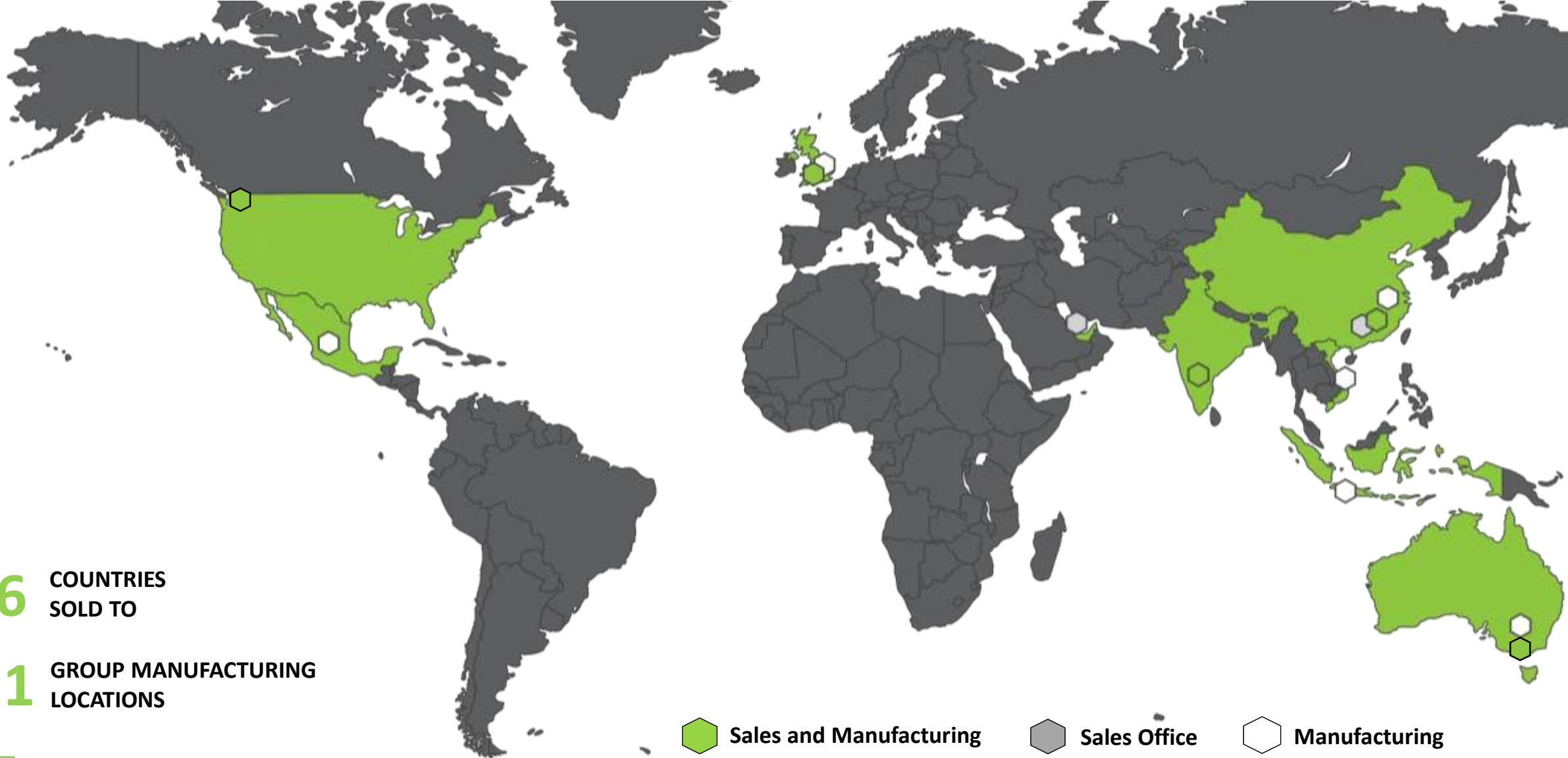
11 GROUP MANUFACTURING
LOCATIONS

7 SALES OFFICES

1 GLOBALLY UNIFIED TEAM

 Sales and Manufacturing  Sales Office  Manufacturing

OUR LOCATIONS



SHARING OUR CORE VALUES



OUR VISION

An innovative
connectivity solutions
company selected by
Partners worldwide





OUR MISSION

**Optimized connectivity
solutions driven by
innovation**



OUR PURPOSE

To create a consistently profitable and growing business that adds value for our stakeholders. Our stakeholders are shareholders, customers, suppliers, employees and families





OUR VALUES

Our values are shared globally and define our commitment to our customers, our work, and each other



DATA CENTER CONNECTIVITY SPECIALISTS

OUR
CREDENTIALS



DATA CENTER CONNECTIVITY SPECIALISTS

**SOLUTION
AND
PRODUCT
AVAILABILITY**



DATA CENTER CONNECTIVITY SPECIALISTS

**DATA
CENTER
NETWORK
INNOVATION**



DATA CENTER CONNECTIVITY SPECIALISTS

FAMILY
COLLABORATION





CONSULTATION

HOW CAN WE HELP?



DEVELOPMENT

HOW WE DO IT





PRODUCTION

MANUFACTURED TO YOUR NEEDS



QUALITY AND STANDARDS

PEACE OF MIND





LOGISTICS

WHAT YOU NEED, WHEN YOU NEED IT

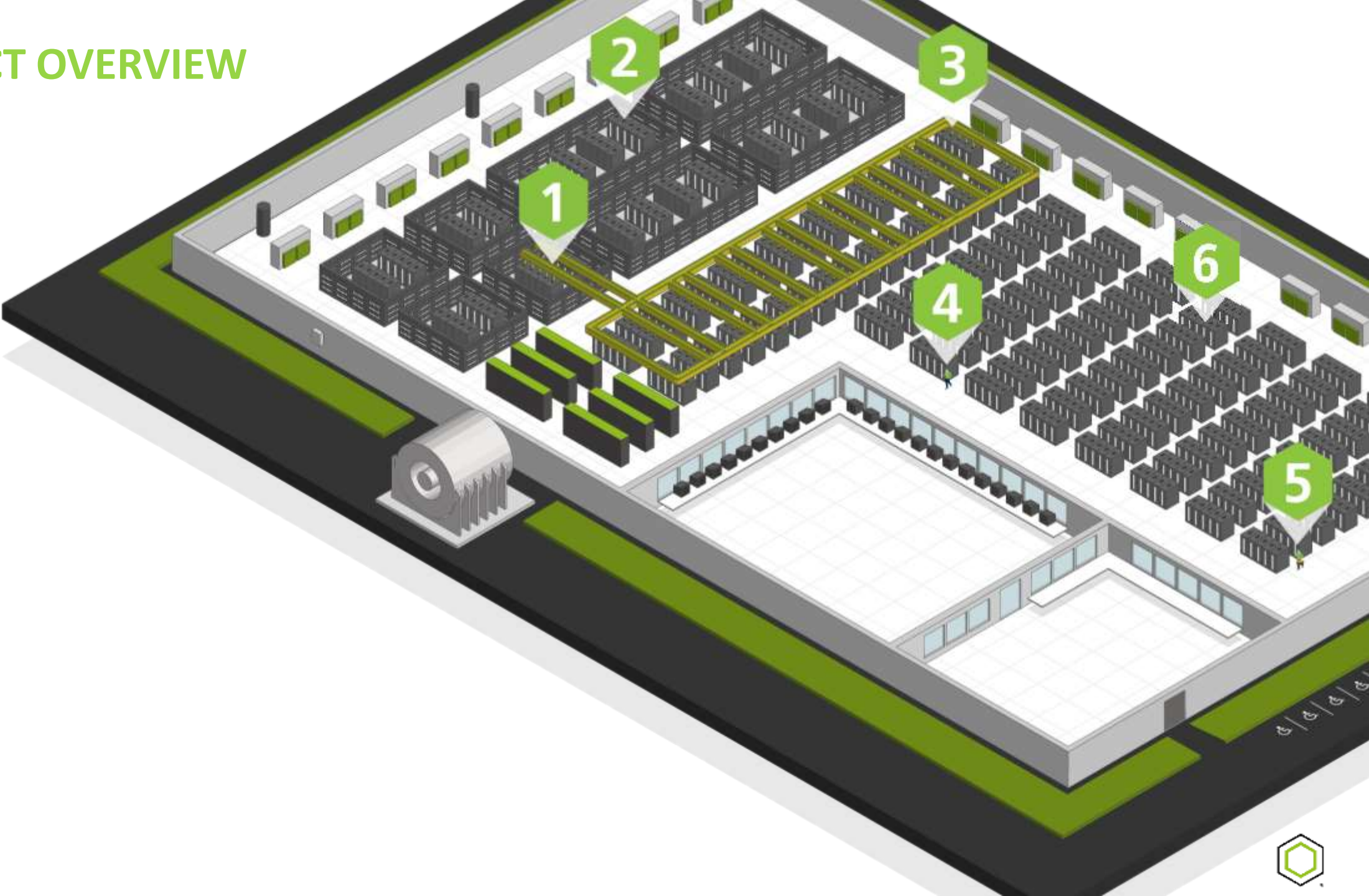


CUSTOMER SERVICE

HERE TO HELP



PRODUCT OVERVIEW



AFL HYPERSCALE.

Ultra-High Density Solutions

Ultra-High Density Introduction



**HIGH
PERFORMANCE**



**FLEXIBLE
CONFIGURATIONS**



**MIGRATES
EASILY**



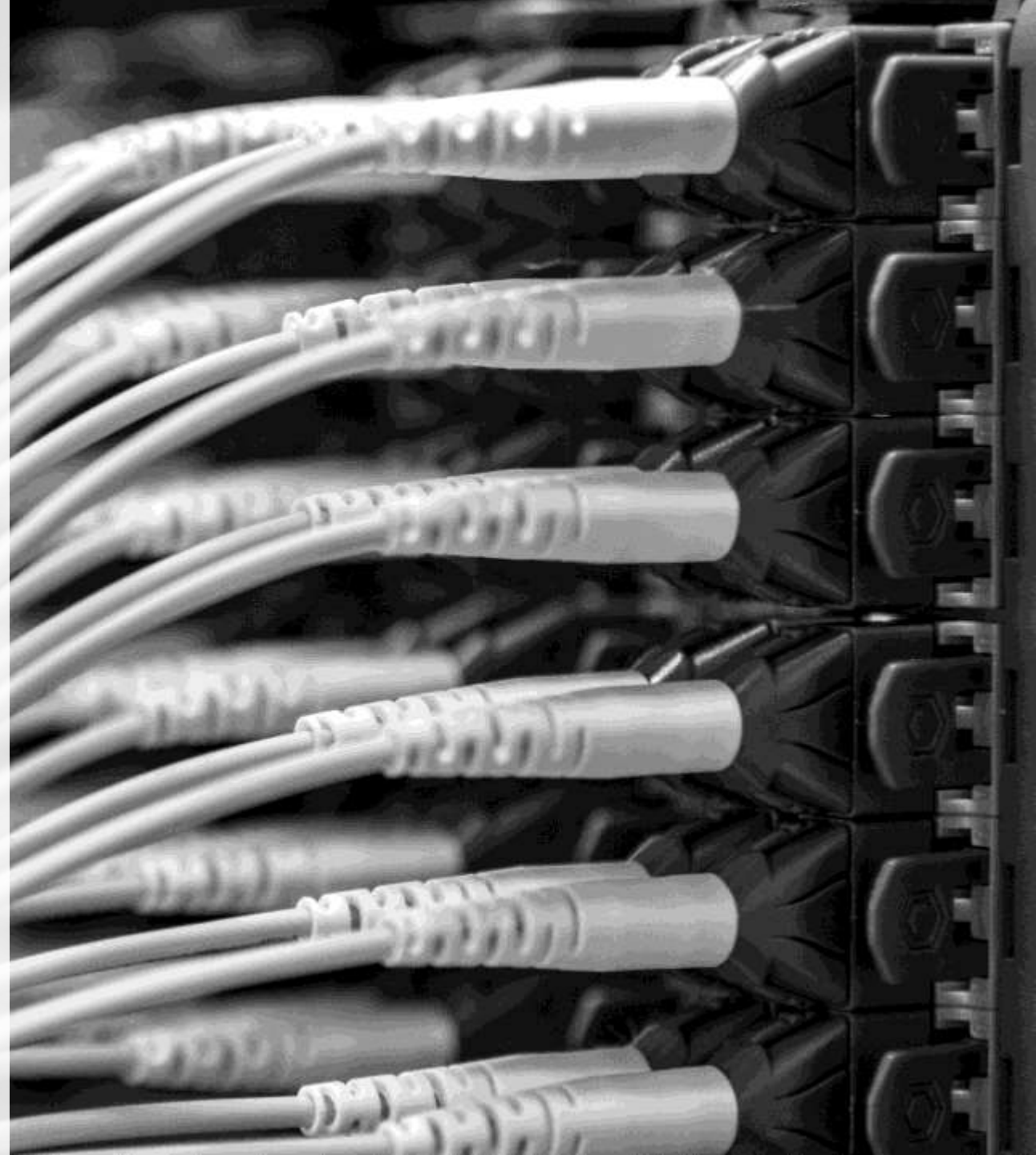
**REDUCED
INSTALLATION
TIME**



**SCALABLE
SOLUTIONS**



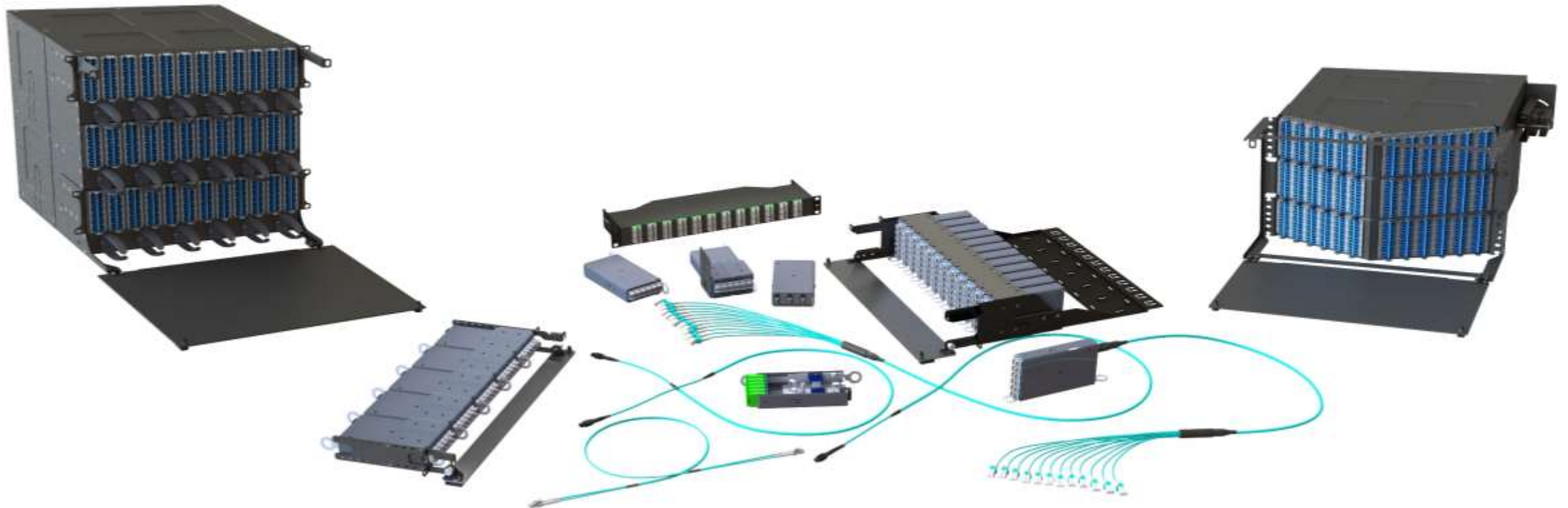
**FAST
LEAD TIMES**



Ultra-High Density Introduction

The AFL Hyperscale UHD Solution is as easy as A, B, C

A: Assemblies **B: Building Blocks** **C: Chassis**





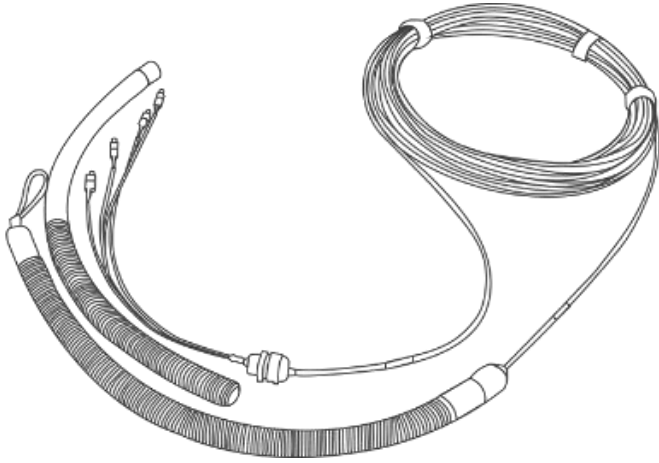
Assemblies

We recommend using pre-terminated assemblies whenever possible.

Get the exact assemblies you require with our easy to use configurators, and save up to 75% installation time by alleviating the need for field terminations or splicing



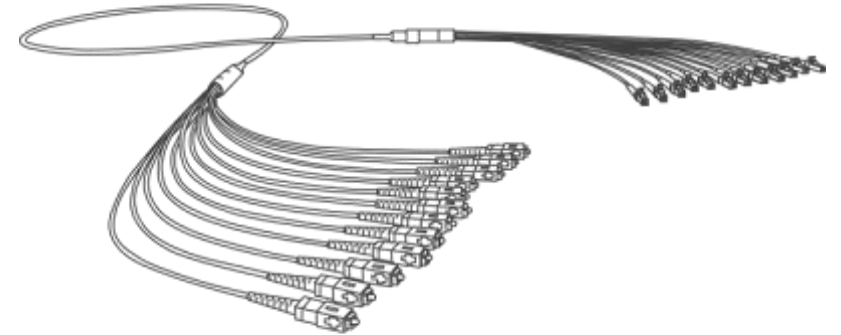
A: Assemblies – Overview



**Multi-Fiber
Assemblies**

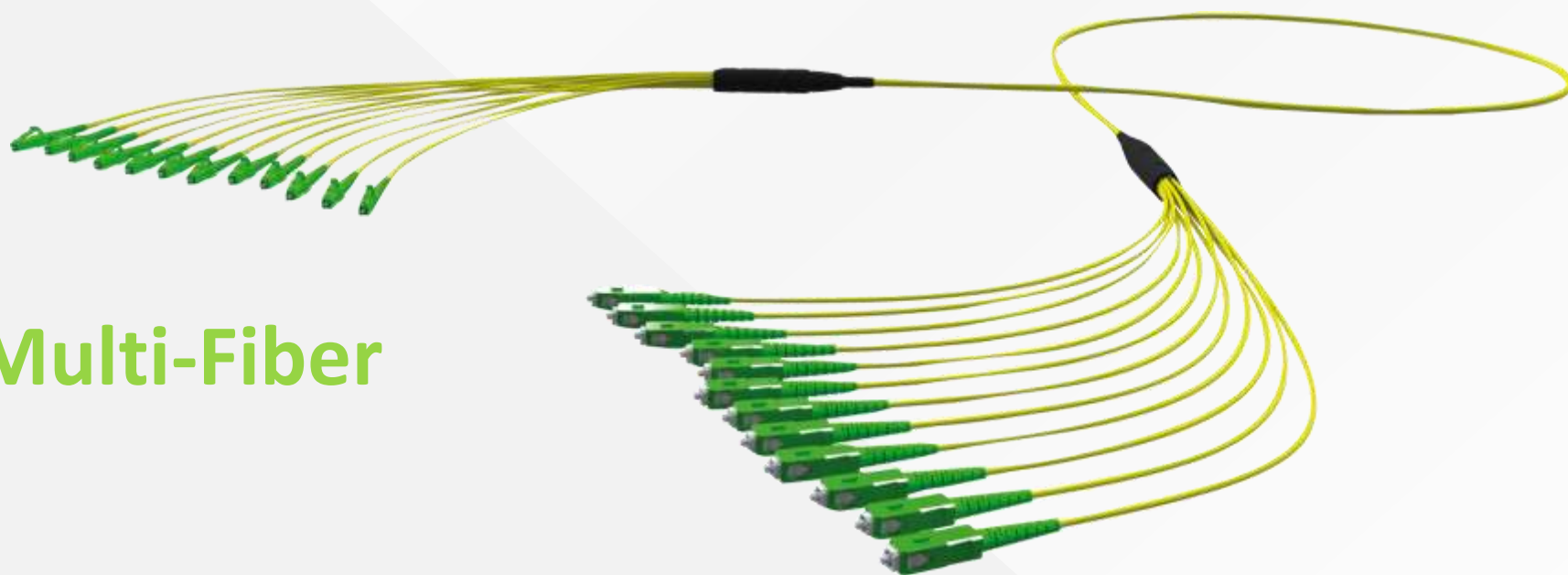


Patch Cords



**High-Fiber Count
Assemblies**





A: Assemblies

Pre-terminated Multi-Fiber Assemblies



High Performance



High Density



Quick to Install



Customizable
Configurations



Factory
Terminated



100%
Tested



CPR
Compliant

Configure your Pre-Terminated Assembly



1 Select your Connector

2-288
FIBRE COUNT

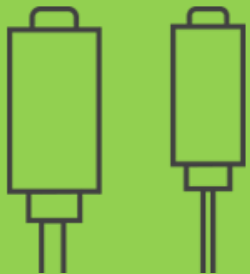
2 Choose your Fiber Count

MULTIMODE
SINGLE MODE

3 Select your Fiber Type



4 Cable Construction



5 Decide your Tail Diameter



6 Tail Length Measurement



7 Define Tip to Tip Length



8 Deploy Quickly



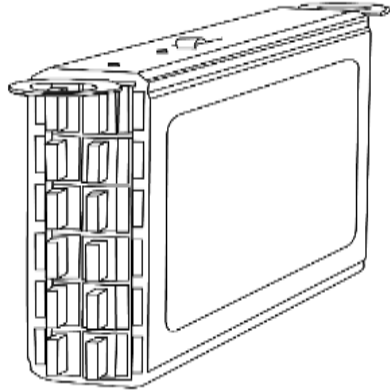


Building Blocks

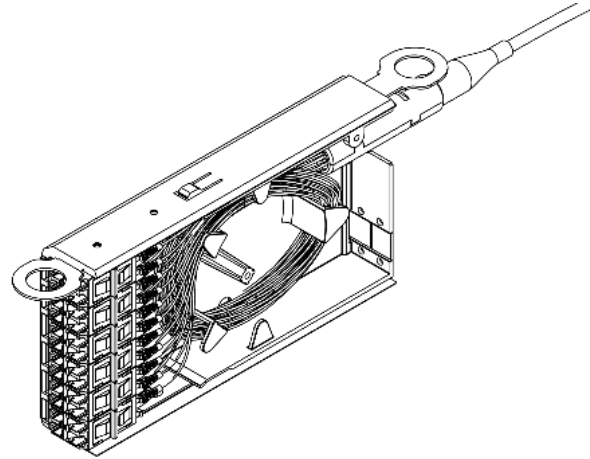
Easy to install and quick to connect, UHD Modules and Adapter Plates are readily available in a number of different configurations for a number of different applications.



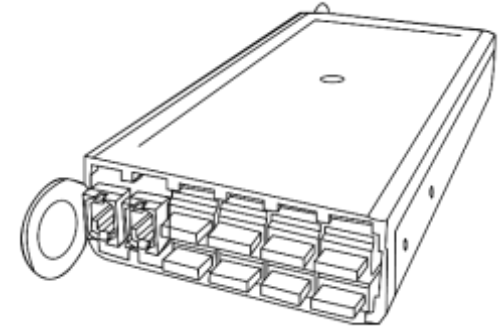
B: Building Blocks – Overview



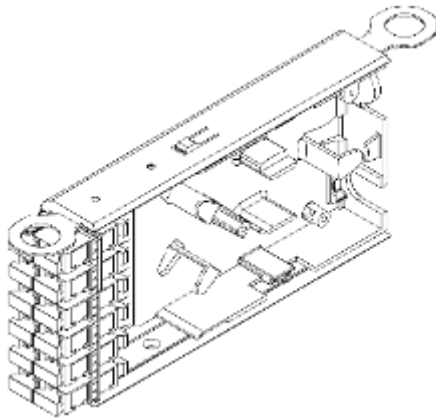
UHD MPO to
LC/SC **Module**



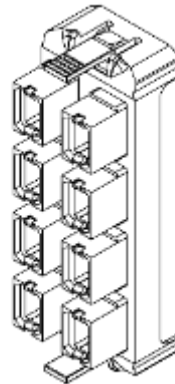
Pre-Terminated
UHD **Module**



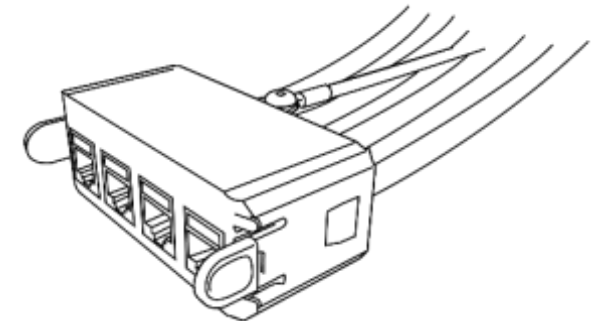
Base-8 UHD MPO
to LC **Module**



UHD Splice
Module



UHD MPO
Faceplate



UHD
Copper **Module**

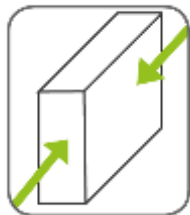


B: Building Blocks

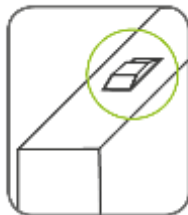
UHD Module



**Easy Module
Assess**



**Front and
Rear loading**



**Service
Latch**



**Up to 24 LC
Up to 12 SC**



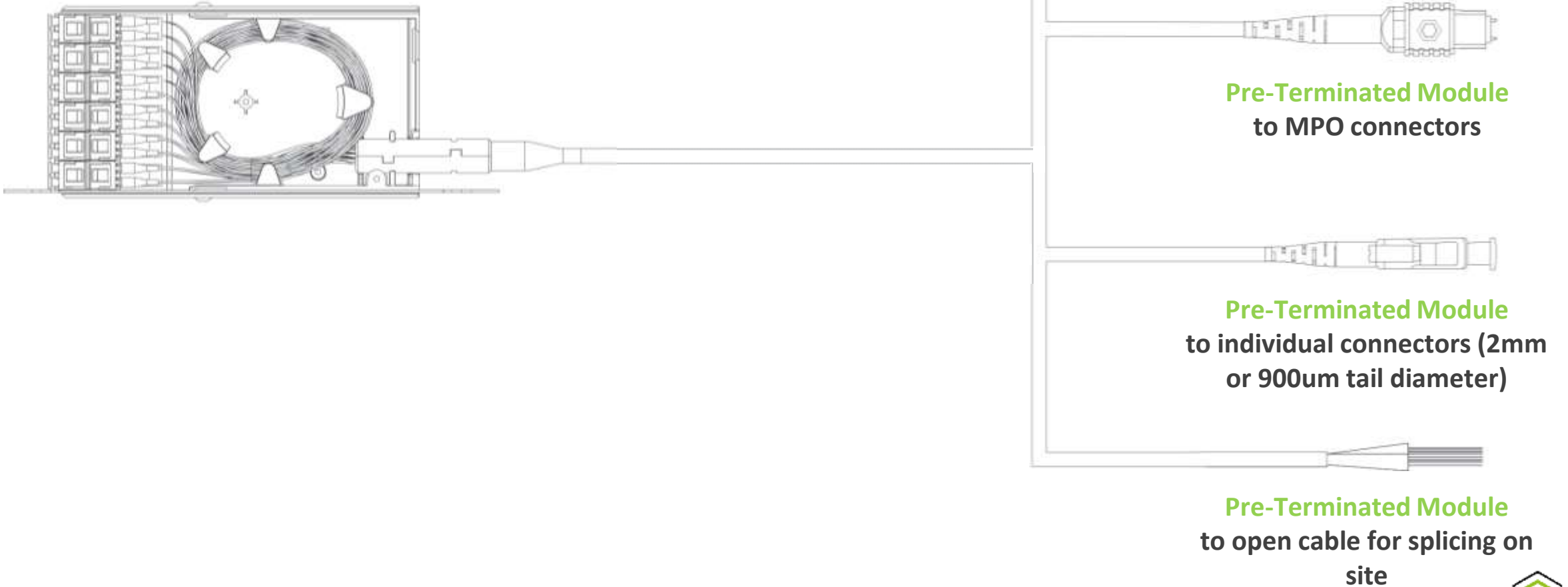
**Shuttered LC Adaptors
for Cleanliness and
Laser Safety**



**Easy Module lock
and release
Mechanism**

B: Building Blocks

Pre-Terminated UHD Module





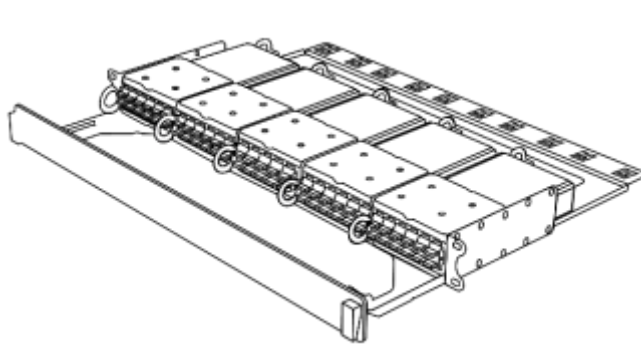
Chassis

UHD chassis, frames, and panels maximize the full potential from your available space.

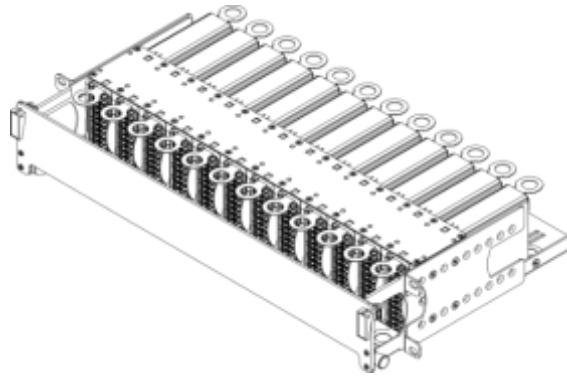
Modular and accessible, our UHD management solutions facilitate quick deployments, easy Moves, Adds and Changes (MACs) and provide potential to scale.



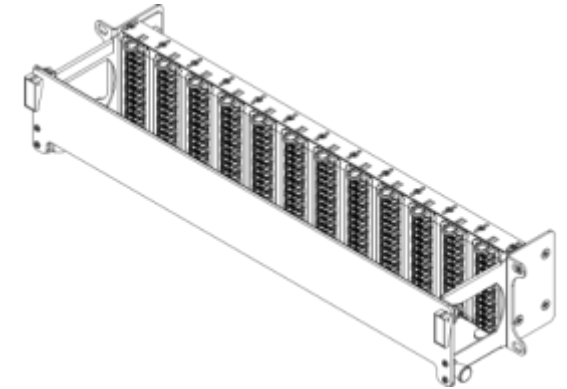
C: Chassis— Overview



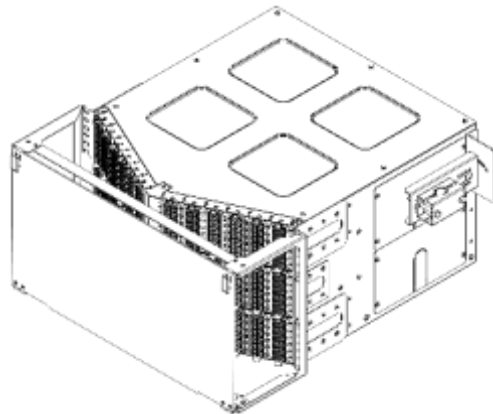
UHD 1U
Modular Chassis



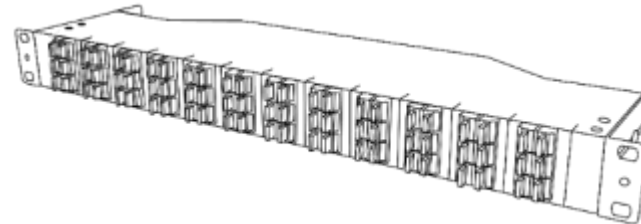
UHD 2U
Modular Chassis



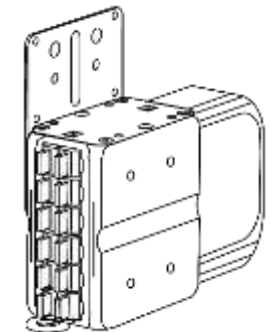
UHD 2U Modular
Patching Frame



UHD 6U Splice
and Patch Frame



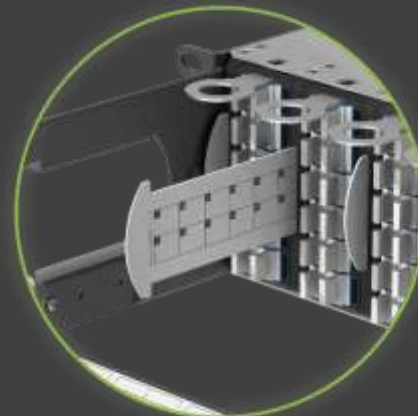
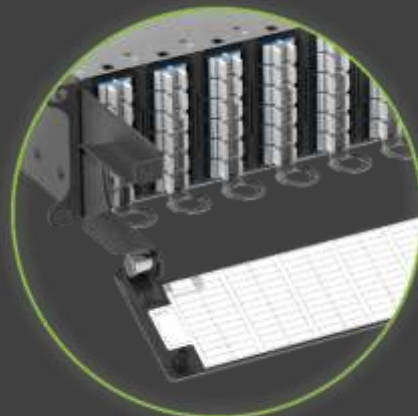
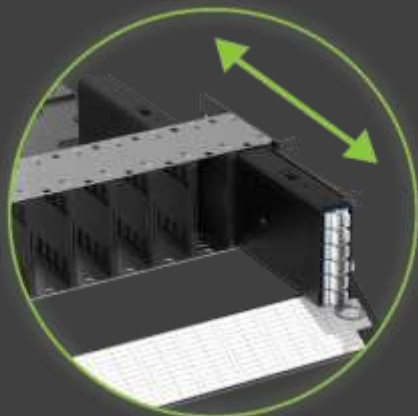
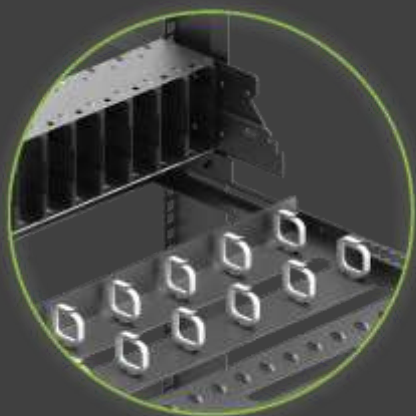
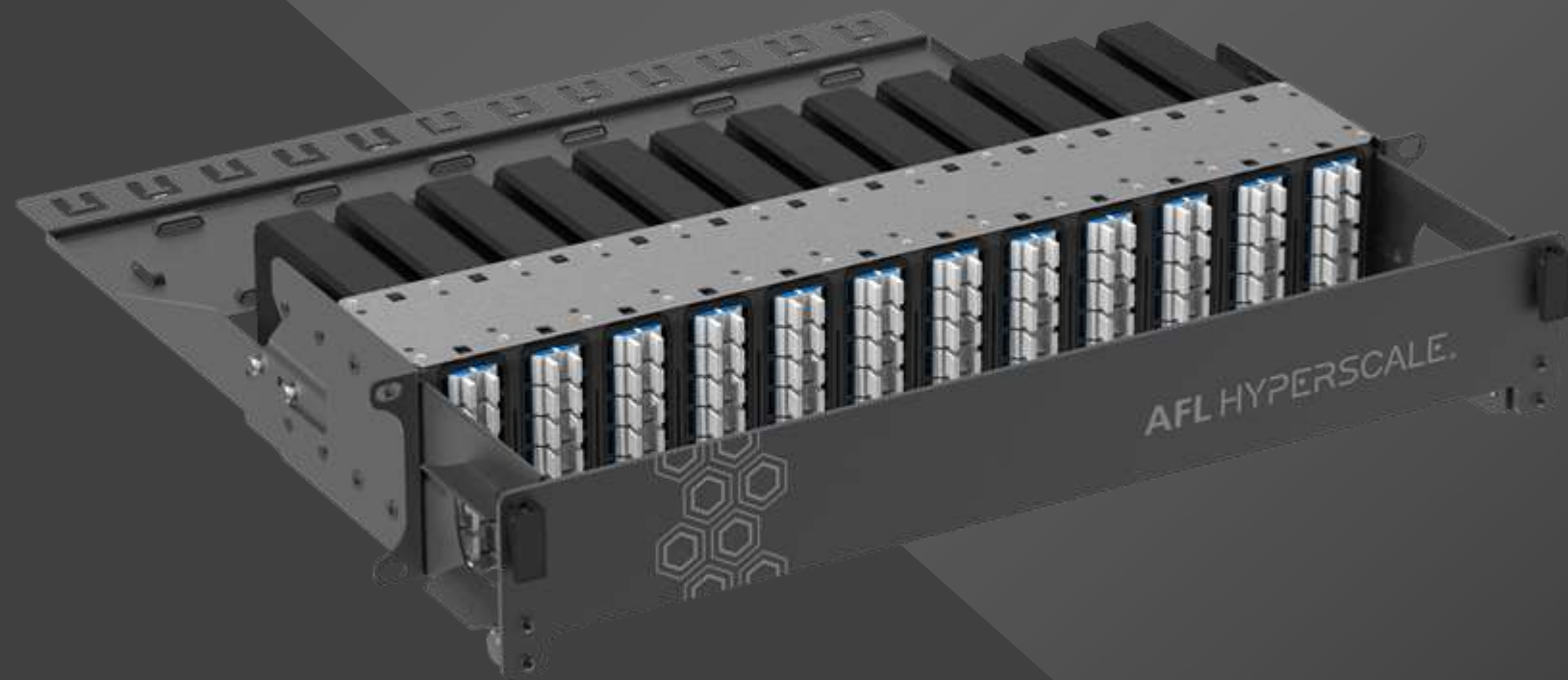
UHD 1U 144F
Slimline Panel



UHD 0U
Chassis



C: Chassis
2U UHD Chassis



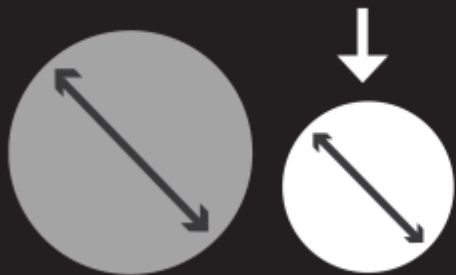


SpiderWeb® Ribbon

Up to

6912

easy to manage fibers
in one cable



Up to

44%

smaller diameter to
similar fiber counts

40%

reduction on
installation time from
cable preparation to
mass splicing



Mass fusion splice
12 fibers at a time

or



Single splice

More than

73%

lighter than today's
ribbon cables



SPIDERWEB® RIBBON

Fiber Counts	1,152f WTC	1,728f WTC	3,456f WTC	1728 Ribbon Loose
Cross sectional view				
Diameter	18.3mm	22.7mm	30.0mm	35.0mm



Supporting Products



Fujikura
Splicers



MPO Splice-On
Connectors



Cleaning



Test and
Inspection





THANK YOU

Please feel free to ask any questions

